

Concrete Forms Services

Aluminum Forms

Ez-Footings | Ez-Tilt-Up | Ez-Flatwork | Ez-Curb & Gutter

EZ-TILT-UP

ALUMINUM TILT-UP FORMS

Using Ez-Tilt-Up forms is the fastest, most cost-effective means to build large concrete buildings to perfection. Our forms are available in an assortment of sizes, or you can also order custom sizes. Just think about the value of using aluminum forms that are strong, precise, versatile and lightweight. You'll hardly ever have a lumber bill again when you're using Ez-Tilt-Up aluminum forms.



FEATURES

- Various sizes from 6" to 9-1/4" tall
- Cuts easily with carbide saw
- Minimal bracing required
- Reduced labor costs
- Builds perfect walls
- Reduces Form and Strip time
- Shows astonishing versatility!



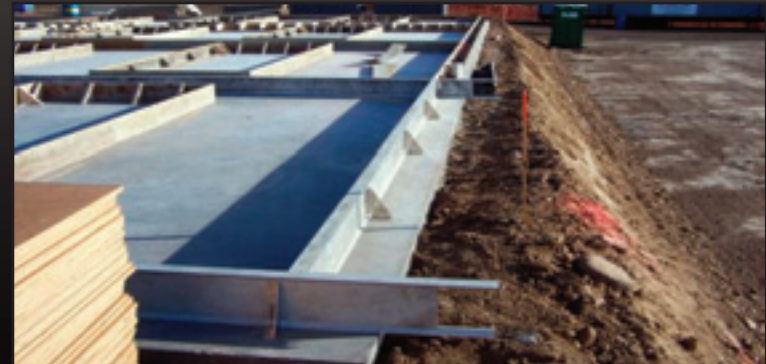
The superior result achieved using a rigid chamfer



Bracing Comparison - Aluminum vs Wood
6'14' Window Opening



58' common form with chamfer



Bracing Comparison at top of wall - braces 5' apart

801-280-6992

ezfootings.com



Cuts easily with Carbide Miter Saw



Chamfer available in 1/2" and 3/4"



Corners connect easily with brackets

Quick Reference guide on how to use EZ-TILT-UP Forms

